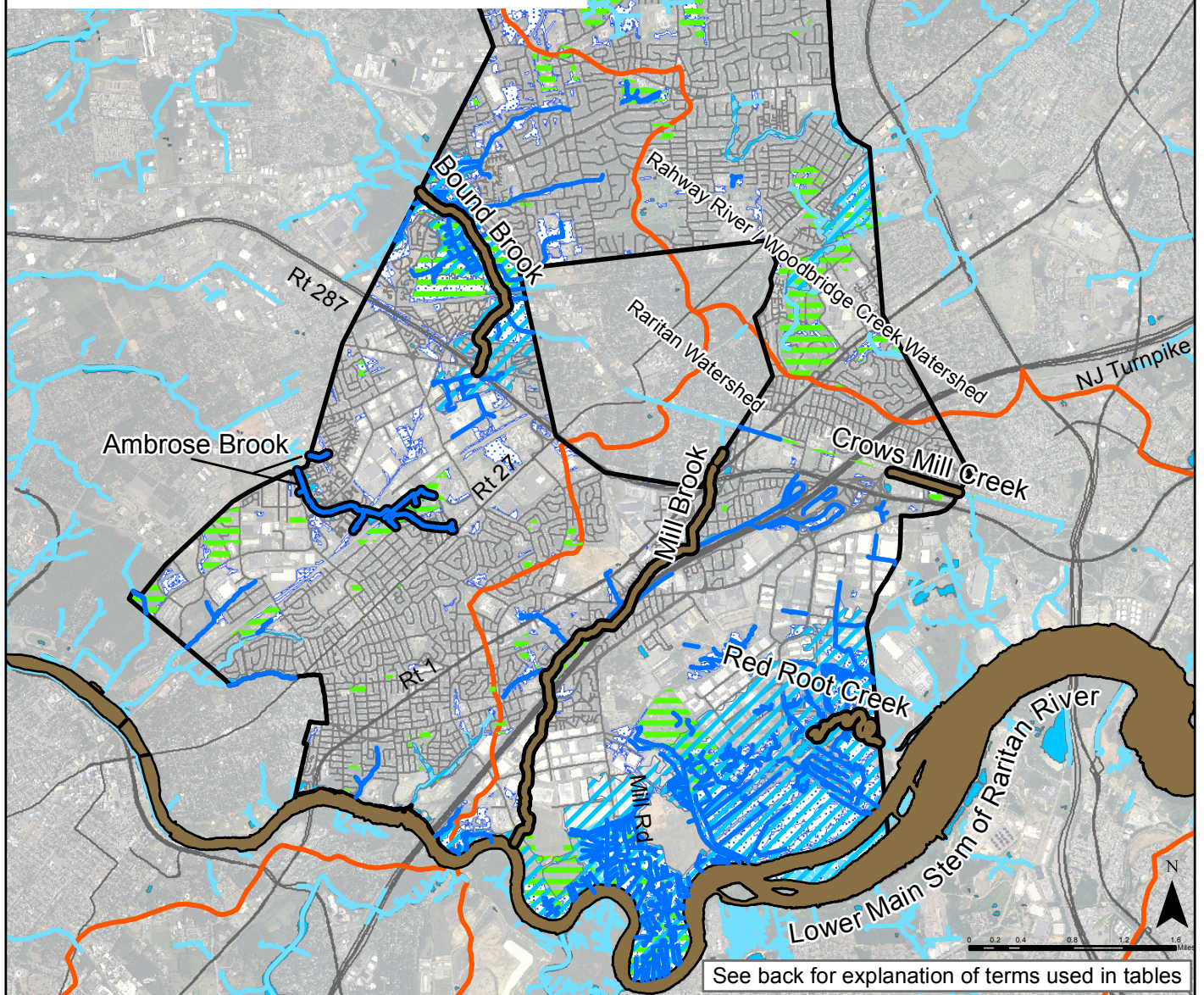


# Edison Streams and Raritan River Uses Map

- Legend**
- Named Stream
  - Known Impaired Stream
  - Unnamed Streams
  - Streams Outside of Edison or Raritan Watershed
  - Edison Township
  - Parks and Open Space
  - 500 Year Flood Zone
  - Watershed Boundaries - HUC 11
  - Wetlands
  - Major Roads
  - Surface Water



See back for explanation of terms used in tables

Lower Raritan River
Does not support aquatic life or fish consumption
Recreational use: insufficient information
Unacceptable chemical levels; <b>acceptable bacterial levels</b>

Bound Brook
Does not support recreational use, aquatic life, or fish consumption
Unacceptable chemical levels; <b>acceptable bacterial levels</b>

**Information for unnamed streams, Silver Lake, Rum Creek, and Ambrose Brook is unavailable**

**Water data source: NJDEP 2010**

Mill Brook
Does not support aquatic life or fish consumption
Recreational use: insufficient information
Unacceptable chemical levels; <b>acceptable bacterial levels</b>
Some causes of impairment unknown

Red Root & Crows Mill Creeks
Supports aquatic life
Does not support fish consumption
Recreational use: insufficient information
Unacceptable chemical levels; <b>acceptable bacterial levels</b>